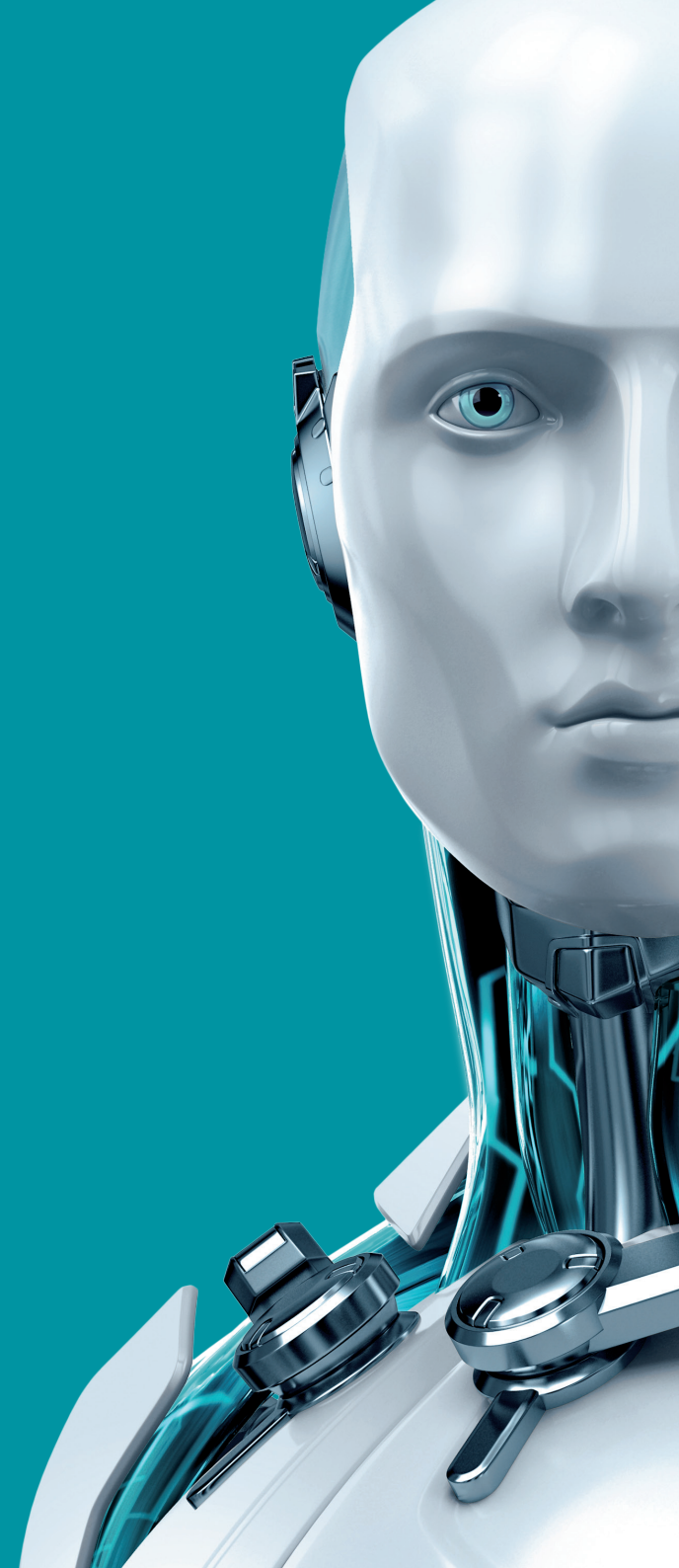




# MOBILE SECURITY



ENJOY SAFER TECHNOLOGY™





# MOBILE SECURITY

ESET Mobile Security provides superior security for your Android smartphone or tablet. Enjoy premier protection against viruses, trojans, ransomware and other malware which can expose your sensitive information or encrypt your data. Proactive Anti-Theft protection can also help you locate a missing device. The product is available in both free and premium version, the latter offering a richer set of features.

## Keeping You Safely Connected with Antivirus & Anti-Phishing Protection

Enjoy your time online wherever you connect, knowing that you are protected. Steer clear of malicious websites and foreign interference. Rely on proven NOD32 technology to make sure that the apps you download are safe and to unmask potentially unwanted applications. With Anti-Phishing, safely avoid fake websites designed to snatch your personal data.

<b>Real-time Scanning</b>	Ensures that all installation files and installed apps are automatically screened for malware. You stay well-protected against online and offline threats including viruses, trojans and ransomware.
<b>On-demand Scanning</b>	Whenever you suspect foul play, run a scan on your phone. It takes place silently in the background, without interrupting your ongoing activities. Access logs and detailed scan results to check for detected threats.
<b>ESET Live Grid</b>	Ensures real-time protection against emerging threats by using in-the-cloud technology collecting malware samples from ESET product users from all over the world.
<b>USB On-The-Go Scanner</b>	Every connected USB device will be checked first to prevent malware accessing your smart phone.

### Premium Features

<b>Anti-Phishing</b>	Protects against malicious websites attempting to acquire your sensitive information – usernames, passwords, banking information or credit card details.
<b>Application audit</b>	See which of your apps has access to what information on your smartphone or tablet. Also monitors sensitive device settings that can lower security such as Debugging Mode that can allow a connection to the system via USB.
<b>Scheduled Scan</b>	Schedule a regular scan for malware at a convenient time – overnight or while the phone is charging if desired.
<b>App Lock</b>	Keeps your applications safe against unauthorized access. Additional authentication is required when accessing sensitive apps so content can be hidden when lending the device to someone.
<b>Automatic updates</b>	Constant updates of your virus signature database.
<b>Connected Home Monitor</b>	Monitor your home network easily and with confidence. All devices connected to your home network are identified and automatically checked for vulnerabilities. Your router is also monitored to identify vulnerabilities and increase your level of protection when connected to a new network. Password strength is also checked and open ports are analyzed.
<b>Call Filter</b>	Block calls from specified numbers, contacts and unknown numbers.
<b>Payment Protection</b>	A new security layer that increases your security when you use sensitive apps to access your money or perform sensitive transactions. This feature automatically recommends protection of apps included in the Finance category (installed from the Google Play Store).

## Proactive Anti-Theft: Control Your Missing Phone Via my.eset.com

Rely on nifty features that help you protect and find your phone in case it goes missing.

### Premium Features

<b>Proactive Anti-Theft</b>	It acts when it detects suspicious behavior. If incorrect Screen lock (PIN, pattern, password) or unauthorized SIM is inserted, device gets locked and snapshots from phone cameras are automatically sent to my.eset.com. The information includes the phone's location, current IP address, inserted SIM details and other data. The user can mark the device as missing at my.eset.com and start Location tracking or send Custom on-screen Message or even Wipe the device contents.
<b>Custom On-screen Message</b>	Send a custom message to the missing device to contact the finder. The message will appear on screen even when the device is locked.
<b>Location Tracking</b>	When the device is marked as missing, the location is regularly sent to my.eset.com and displayed on the map, helping you track its position in time. If the device's location changes, its location is sent to my.eset.com for up to date tracking.
<b>Camera Snapshots</b>	Snapshots are automatically and regularly sent from the phone's front and back camera to my.eset.com if the device is marked as missing. This helps to identify its location or its finder.
<b>Low Battery Alert</b>	When the device is low on battery, its current position and camera snapshots are automatically sent to my.eset.com before the device shuts off.
<b>SIM Guard</b>	Lets you stay in control of your phone if it goes missing. Your phone will be locked when unauthorized SIM card will be inserted.
<b>Anti-Theft Optimization</b>	Automatic notification when settings are limiting Anti-Theft's functionality (GPS turned off for example).



Scan QR code with your smartphone to download ESET Mobile Security.

## Security Overview

Check your device's security status – quickly and easily

---

### Security Report

Gives you a monthly insight into how ESET protects your device. The report gives you information about the number of scanned files, blocked web pages and much more.

---

## Premium Features

---

### Security Audit

See which of your apps has access to what information on your smartphone or tablet. Also monitors sensitive device settings that can lower security such as Debugging Mode that can allow a connection to the system via USB.

---